

*An OpenLogic*

# **ERP Framework**

for Large & SME  
Industry





## Experience the proven business growth tool for Large & SME industry.

**DataNote** is not just an ERP but its framework, which enables the possibility of enriched customization. **DataNote** is the leading Dual Platform ERP framework which can be hosted on the cloud as well as you can keep it in your local premise. **DataNote** ERP solution is specifically designed for all those organizations which wants to keep their data ready with maximum analysis and minimum effort.

**DataNote** is not like any other standard or local ERP. It's first ERP of its kind in the market which offers huge customization possibilities with the help of customization panel which is available within the solution.



# Tailored Industry Specific Solution,

## Food & Beverages Industry

Spices and Ingredients,  
Packaged Foods,  
Candies and Confections,  
Bakery & Chocolate



## Engineering Industry

Parts Manufacturing,  
Machine Manufacturing,  
Fabrication & Heavy Engineering



## Metal Industry

Tube and Pipe Manufacturing,  
Coil And Sheet Processing,  
Rolling Mills Industry



## Plastic & Rubber Industry

Woven and Geosynthetic,  
Moulding,  
Pipes and Fittings,  
Disposable Items



## Casting & Forging Industry

Investment Casting,  
Sand Casting,  
Foundry Industry



## Chemical Industry

Paint Industry,  
Pharmaceuticals,  
Pesticides and fertilizers,  
Dyechem



## Solar Industry

Solar Panel Manufacturer,  
Electronic Instruments,  
LED Lights Manufacturer



## Garment & Textile Industry

Garment Manufacturing,  
Textile Manufacturing,  
Retail Outlet Management



## Building Material Industry

Cement & RMC Industry,  
Glass Manufacturers,  
Ceramic Industry



## Healthcare Industry

Cosmetics Industry,  
Ayurveda Industry,  
FMCG - Household Industry



## SALES MANAGEMENT

- Dispatch Planning
- Sales Invoicing
- Point of Sale
- Sales Return
- Packing Slip

## FINANCE MANAGEMENT

- General Ledger
- Accounts Payable
- Accounts Receivable
- Cash Management
- Fixed Asset Management
- Advance Allocations
- GST Integrated
- Consolidations

## PRODUCT DATA

- Bill of Material
- Process Routing
- Engineering Change & Revision Control
- Product Specification & Accessories
- Product Costing

## PLANNING & PRODUCTION

- Material Requirement Planning
- Production Scheduling
- Machine Planning
- Production Process wise QC
- Work Order Management
- Job Work Management

## PROJECT MANAGEMENT\*

- Project Estimation
- WBS - Work Breakdown Structure
- Resource Management
- WBS Review
- Expense Management
- Project Billing & Breakup

## PURCHASE MANAGEMENT

- Indent Management (Auto - Manual)
- RFQ - Request for Quotation
- Quotation Comperasion
- Purchase Order Management
- Gate Inward Management
- Inward QC
- GRN & Bill Booking
- Purchase Return Management

## HUMAN RESOURCE

- Payroll Management
- Tour & Travelling
- Loan / Advance
- Leave Management
- Salary Generation
- Human Resource Management
- Induction & Training
- Attendance Management

## Marketing / CRM

- Contact Management
- Lead & Opporchunity Management
- Estimate & Quote Management
- Order Management
- Case & Solution Management
- Mobile Connect

## MAINTENANCE

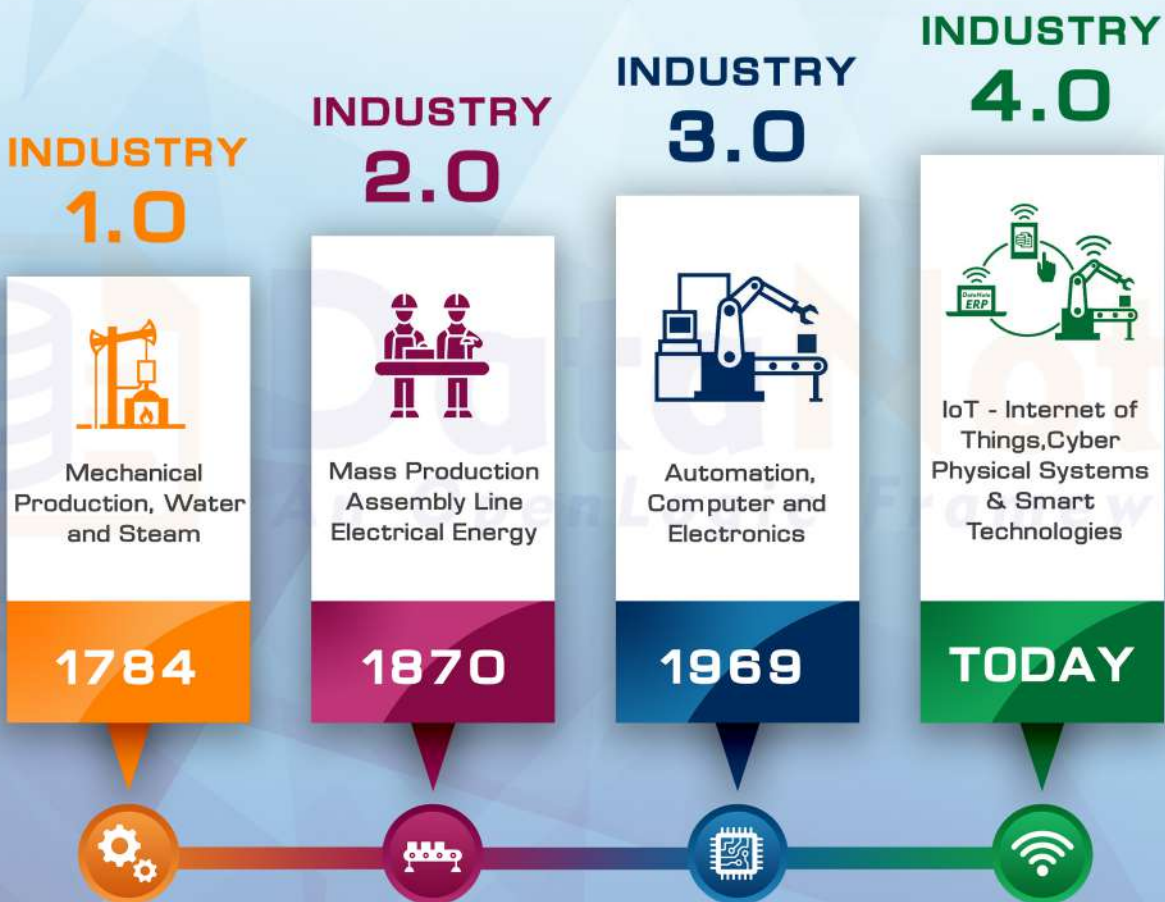
- Machine Registration
- Machine Check List
- Preventive Manintenance
- Break Dwn Registration
- Recovery with CAPA Analysis
- Machine & Tool History Card



# THE BRAND NEW YET MATURE PRODUCT FROM SAFAL

## DataNote is the newest version from SAFAL

DataNote includes many new features and offers a new client. The DataNote ERP is a web-based product with a modern look and feel. It's supported on multiple platforms – tablets, smart phones, laptops and desktops – by industry standard browsers. The DataNote ERP can be used in conjunction with the DataNote ERP and you can choose to give your users access to one or both clients, depending on their needs. DataNote provides a modern and impressive user interface and ensures a consistent user experience across all platforms and devices. Because it is built on the modern technology, you have the flexibility to tailor the application to include dashboards that present metrics and data that are important to you, business logic to enforce your company processes and best practices as well as activities that are automatically synchronized to your calendar.





# Why DataNote ERP?

## POWERING YOUR ENTIRE BUSINESS

From supply chain management to purchasing, customer relationships to sales, and inventory to accounting, DataNote ERP covers all areas of planning, operations, logistics, administration, finance and management on one platform. Real-time data is accessible with integrity and accuracy leading to prompt and confident decision-making, premium customer service and transparent risk management. With integrated workflow and business modeling, each of your business areas can define its own conditions, working environment and dashboards on a per-user basis.

## DESIGNED TO GROW WITH YOU

From small single-site organizations to large multi-company enterprises, DataNote ERP is highly scalable and will grow with you. Depending on your business requirements, implement only what you need. DataNote ERP will adapt to your changing business conditions. With every new update, the client will have a number of new facilities and utilities to get latest update from the market.

## FLEXIBLE AND EASILY CUSTOMIZABLE

While most companies require the same core functionality, each company has unique elements in its operations. DataNote ERP provides powerful business modeling tools allowing your company to use our proven template models or personalize the ERP to your unique requirements. With no need to change source code, DataNote ERP is adaptable with natural flexibility and will accommodate the most sophisticated requirements with ease using first in class customization tool available in DataNote ERP.



# How OpenLogic Framework Works?

*"DataNote is a revolutionary ERP software that promises enterprise-grade technology without having to compromise on confidentiality. Now, working on OpenLogic Framework, DataNote is divided into two categorized source code segments to promise a high level of customization during & post-deployment."*



**OpenLogic**<sup>™</sup>  
Framework



## STRUCTURE ENGINE

The base-level source code for DataNote ERP comprising of core features, dedicated modules, add-ons, etc. Significantly structure engine is the brain of the ERP solution responsible for carrying out all activities without needing you to move an inch or spend time on customization. In other words, the structure engine consists of millions of code lines defining all basic features of the ERP.

## LOGIC ENGINE

The logic engine provides companies with complete freedom to customize ERP processes, modules, user interface, etc. based on operational requirement. For this reason, our modular approach promises you will not have to share your trade secrets and operational policies at any point to ensure complete trade secrecy. In general, the ownership of logic engine always stays with you and it consists of thousands of lines of code making your ERP solution highly-contestable for eternity.





## ERP & CRM



**SAFAL**  
INFOSOFT PVT. LTD.

An ISO 27001:2013 Certified Company

**Corporate Office:**

A-210, Signature 2 Business Park, Sakhej Sanand Cross Road,  
SG Highway, Ahmedabad - 382210, Gujarat - INDIA

**Development Office:**

C-302, Signature 2 Business Park, Sakhej Sanand Cross Road,  
SG Highway, Ahmedabad - 382210, Gujarat - INDIA

**Overseas:**

Mauritius | Bangladesh | Kenya | UAE

[www.datanote.in](http://www.datanote.in), [www.safalerp.com](http://www.safalerp.com)

Toll Free Number: 1800 270 0405 (India)